

EN

  
WINBACK



**WINSHOCK**<sup>®</sup>

THERMO CRYO

# THERMO CRYO SHOCK

**-15°C...+45°C**

Double electric generator able to produce thermal energy and to reach extreme temperature thresholds very quickly (from -15°C to 45°C in 25 sec). The technology alternates cryotherapy treatment and hyperthermia with an accuracy of a tenth of a degree.

## CRYOTHERMY

(-15°C/-5°C)

## COLDTHERMY

(0°C/5°C)

## HYPERTHERMY

(35°C/45°C)



Winshock provides a large range of treatments with either fixed temperatures or programmes that alternate hot and cold and favour healing as well as blood and lymphatic circulation.

## CRYO

## THERMO

### MANUAL PROGRAM

from 1 ... to 15 min.

Choose your temperature  
between -15°C and 45°C

## CRYO SHOCK

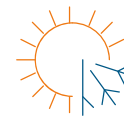


### DYNAMIC PROGRAM

cyclic from 1... to 6 times (5min)

3 MIN CRYO (-5°C)  
2 MIN THERMO (+40°C)

## THERMO SHOCK



### DYNAMIC PROGRAM

cyclic from 1... to 6 times (5min)

3 MIN THERMO (+40°C)  
2 MIN CRYO (-5°C)

# WINSHOCK adapts to your practice.

Follow your intuition, **Winshock** will adapt to your needs and/or your manual expertise while **enhancing your patient's rehabilitation**. Express, assisted, hands free or expert mode, the choice is up to you!



1.0

## EXPRESS MODE

1 FIXED or MOBILE PAD : One pad is applied on the patient. Should you want to treat your patient with electrostimulation, do not forget to use a return stim pad to close the circuit.



2.0

## HANDS FREE MODE

2 FIXED PADS : Electrodes are stationary to leave your hands totally free for a complete freedom in your practice.



3.0

## EXPERT MODE

2 MOBILE PADS : You work with two electrodes. Laid down on your table, your patient is able to relax while you are completely free to work in depth.



1.1

## EXPRESS MODE

1 mobile pad + 2 stim pads



2.1

## HANDS FREE MODE

2 fixed pads + 2 stim pads



2.2

## HANDS FREE MODE

2 fixed pads + 4 stim pads

## YOUR PRACTICE

THERMO CRYO

Thermo Cryo Shock and Stim Shock are generated at the same time by the two PADS with no need to add adhesive electrodes. The practitioner can add two additional electrostimulation channels (X.1 et X.2) to the PADS' one. The association of the two SHOCKS (THERMO CRYO & STIM) multiplies the effectiveness of the treatment chosen by the therapist.

STIM SHOCK

# STIM SHOCK

Winback is recognised as a pioneer in electric current management. With Winshock, the thermoelectric current (*hot and cold temperature management*) is combined with the medium frequency currents (*MF*) that gave birth to PUSH & PRESS functions.

**The little bit extra:** To reinforce your treatment by targeting a broader area, Winshock allows you to plug a return pad directly on the device and two stim pads on each electrode.



## PRESS (*Pr*)

This mode strengthens muscles in depth with a comfortable stimulation. It recruits muscles to make rehabilitation easier and lower the necessary recovery time, in particular after a trauma.

**CURRENT : 4000 HZ**

## PUSH IN (*Pi*)

This function can only be used with manual programme at a maximum of +15°C. It enables a better cold penetration in depth. It provides anti-inflammatory effects and durably reduces the pain.

**CURRENT : 250 HZ À 1000 HZ**

## PUSH BACK (*Pb*)

This function stimulates the return lymph flow towards lymph nodes thanks a faster elimination of lymphoedema, most notably in postoperative phase.

**CURRENT : 1,7 HZ**



## INDICATIONS

The local application of THERMO CRYO favours the healing of damaged tissues and alleviates pain. It heals inflammations, oedemas and haematomas, by reducing the oxygen level in damaged tissues and favouring drainage, which is useful to eliminate toxins.

- 3'** **PAIN** 3 MIN  
Gate Control: Localised and temporary reduction of nerve conduction (analgesic)
- 5'** **INFLAMMATION** 5 MIN  
Localised reduction of the inflammatory process with enzymatic limitation
- 15'** **TRAUMATOLOGY** 15 MIN  
Arterial and capillary vasoconstriction to limit the formation of oedemas
- 15'** **REHABILITATION** 15 MIN  
Increase the metabolic activity by deep stimulation with pain and inflammation limitation

<b>COOLDOWN</b> 1 MIN
<b>RHEUMATOLOGY</b> 20 MIN
<b>PHLEBOLOGY</b> 30 MIN
<b>FITNESS FAT BURNING</b> 30 MIN
<b>SPORT RECOVERY</b> 30 MIN

## WINBACK ACADEMY

This training covers all the applications of Winshock and places practitioners in their normal working environment, regardless of their specialty: rehabilitation, sport, health, beauty...

It is provided by Winback Academy, which already trained several thousand people all over the world, including more than 3000 in France.

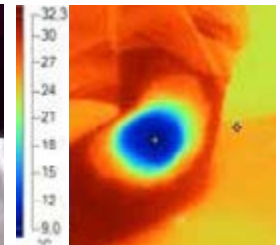


## STUDY CASE

Protocols for fractured elbow. T+3 weeks after plaster

**GOALS:** muscular maintenance, gain of range, painkiller, anti-inflammatory

TIME	MODE	METHOD	ACCESSORY
3x5min cycles Cryoshock	PRESS	Pad in regard to the fracture site, one stim pad on biceps and one stim pad on the forearm's flexors	1.1





# WINSHOCK®

## FEATURES:

**Frequency:** : Push in: 250, 500, 1000 Hz  
Push Back: 1,7 Hz  
Press: 4000 Hz

**Function:** Push in, Push Back, Press

**Program :** Cryothermo, Cryoshock, Thermoshock

**Temperature :** Non-invasive: -15°C to +45°C

**PADS:** X2 + 4 stim Pads

**Formation :** WINSHOCK

**Poids :** 5 kg

**Dimensions :** 160 x 350 x 330 mm

## ENVIRONMENTALLY FRIENDLY:

Winshock's carbon footprint is totally neutral. Indeed, the device turns electric current into thermal energy without any loss, whether it is cold or hot. This system provides countless benefits: no mechanical system nor noise annoyance, great reliability, almost infinite lifespan. Additionally, it avoids the pollution generated by the use of gas or liquids.

 **WINSHOCK®**  
BY WINBACK

885 Av. du Docteur Lefebvre, Twins 2  
06270 Villeneuve Loubet - FRANCE  
**04 83 66 16 66**  
[contact@winback.com](mailto:contact@winback.com)